

TOILET ROLL HOLDER 5 - CARE INSTRUCTIONS

N1101, 01101



N1101
» Brushed



01101
» Polished

Material: Stainless steel, AISI 304

Design: FROST A/S

Manufacturer: FROST A/S

Dimensions:

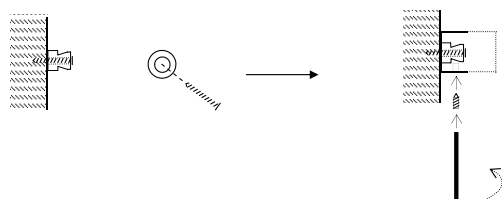
Height: 88 mm

Width: 141 mm

Projection: 40 mm

Mounting:

Screw the brass insert on the wall. Make sure it is mounted as illustrated. Place the product on the brass insert and use the allen key to tighten the set screw.



Cleaning and maintenance:

All surfaces should be cleaned with a microfiber cloth, glass cleaner or other non-abrasive and gentle agents. Use a soft dry cloth to wipe dry. When polishing steel with a hairline finish, please remember always to polish with the grain of the steel.

Attention:

Never use solvents or aggressive household cleaners like bleach, acids (e.g. descalers) or ammonia-based bathroom cleaner to clean the product. Steel wool and hard brushes can permanently damage the surface of the steel.

Practical information:

In the case of manufacturing defects, please contact the store where the product was purchased. Always remember to bring your receipt.

Exclusion of liability:

FROST accepts no liability whatsoever for damage to persons or property that occurs as a result of improper installation or maintenance, particularly if the instructions have not been observed in full.