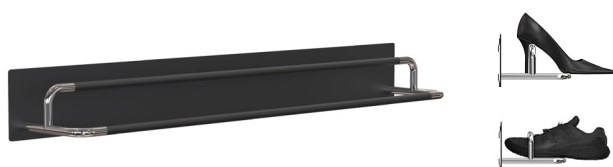
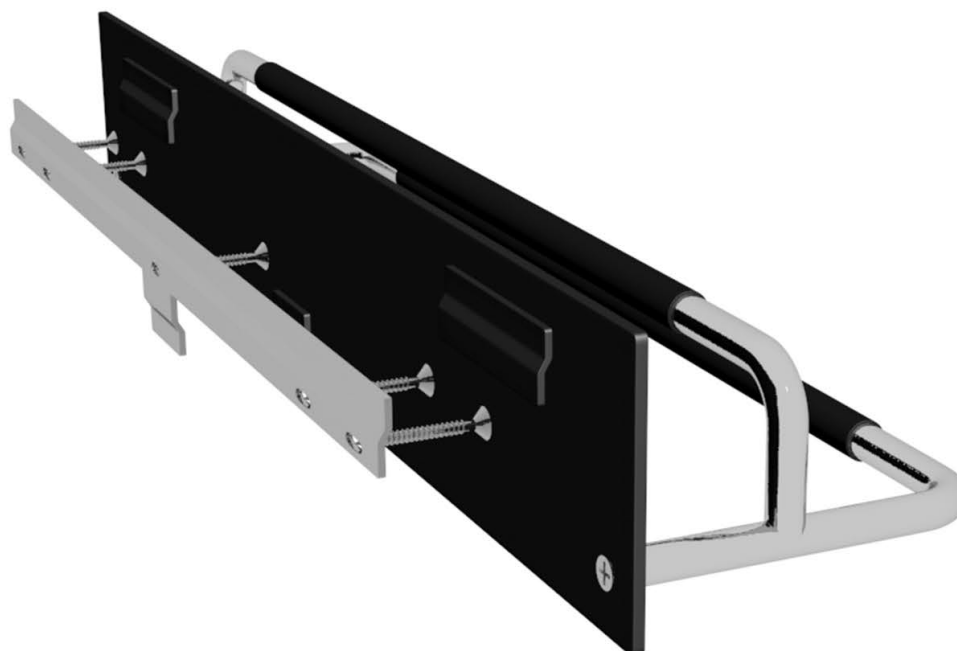


RADA SHOE RACK

W5001-B, W5001-W, W5002-B, W5002-W



RADA is a shoe rack with a minimalistic design in polished stainless steel and special lacquer. The unique design of RADA gives the option to place the shoes in two different ways, where by it is suitable for lady shoes with high heels as well as trainers and boots. The discreet wall plate with concealed mounting also serves as protection for the wall besides giving a strong and cleaning friendly fixing to the wall.

Material: Stainless steel, polished + steel, painted.

Design: busk+hertzog

Dimensions:

Height: 120 mm
 Width: 600 mm / 1000 mm
 Projection: 164 mm
 Weight: 3 kg / 5 kg

Cleaning and maintenance

Polished stainless steel surfaces should be cleaned with a microfiber cloth, glass cleaner or other non-abrasive and gentle agents. Use a soft dry cloth to wipe dry.

Practical information

In the case of manufacturing defects, please contact the store where the product was purchased. Always remember to bring your receipt.

Exclusion of liability

FROST accepts no liability whatsoever for damage to persons or property that occurs or has occurred as a result of improper installation or maintenance, particularly if the safety instructions and other points to note listed are not or have not been observed in full.

